

**SUBJECT**

New Hwy 290

FM 359

Waller Spring Creek

Waller County Land

Houston Hwy

Burton Cemetery

Mound Creek Subdivision

Sharp

Sharp

Sharp

Sharp

Sharp

Sharp

Sharp

Sharp

Sharp

Sharp

Sharp

Sharp

Sharp

Sharp

Sharp

Sharp

Sharp

Sharp

Sharp

Sharp

Sharp

Sharp

Sharp

Sharp

Sharp

Sharp

Sharp

Sharp

Sharp

Sharp

Sharp

Sharp

Sharp

Sharp

Sharp

Sharp

Sharp

Sharp

Sharp

Sharp

Sharp

Sharp

Sharp

Sharp

Sharp

Sharp

Sharp

Sharp

Sharp

Sharp

Sharp

Sharp

Sharp

Sharp

Sharp

Sharp

Sharp

Sharp

Sharp

Sharp

Sharp

Sharp

Sharp

Sharp

Sharp

Sharp

Sharp

Sharp

Sharp

Sharp

Sharp

Sharp

Sharp

Sharp

Sharp

Sharp

Sharp

Sharp

Sharp

Sharp

Sharp

Sharp

Sharp

Sharp

Sharp

Sharp

Sharp

Sharp

Sharp

Sharp

Sharp

Sharp

Sharp

Sharp

Sharp

Sharp

Sharp

Sharp

Sharp

Sharp

Sharp

Sharp

Sharp

Sharp

Sharp

Sharp

Sharp

Sharp

Sharp

Sharp

Sharp

Sharp

Sharp

Sharp

Sharp

Sharp

Sharp

Sharp

Sharp

Sharp

Sharp

Sharp

Sharp

Sharp

Sharp

Sharp

Sharp

Sharp

Sharp

Sharp

Sharp

Sharp

Sharp

Sharp

Sharp

Sharp

Sharp

Sharp

Sharp

Sharp

Sharp

Sharp

Sharp

Sharp

Sharp

Sharp

Sharp

Sharp

Sharp

Sharp

Sharp

Sharp

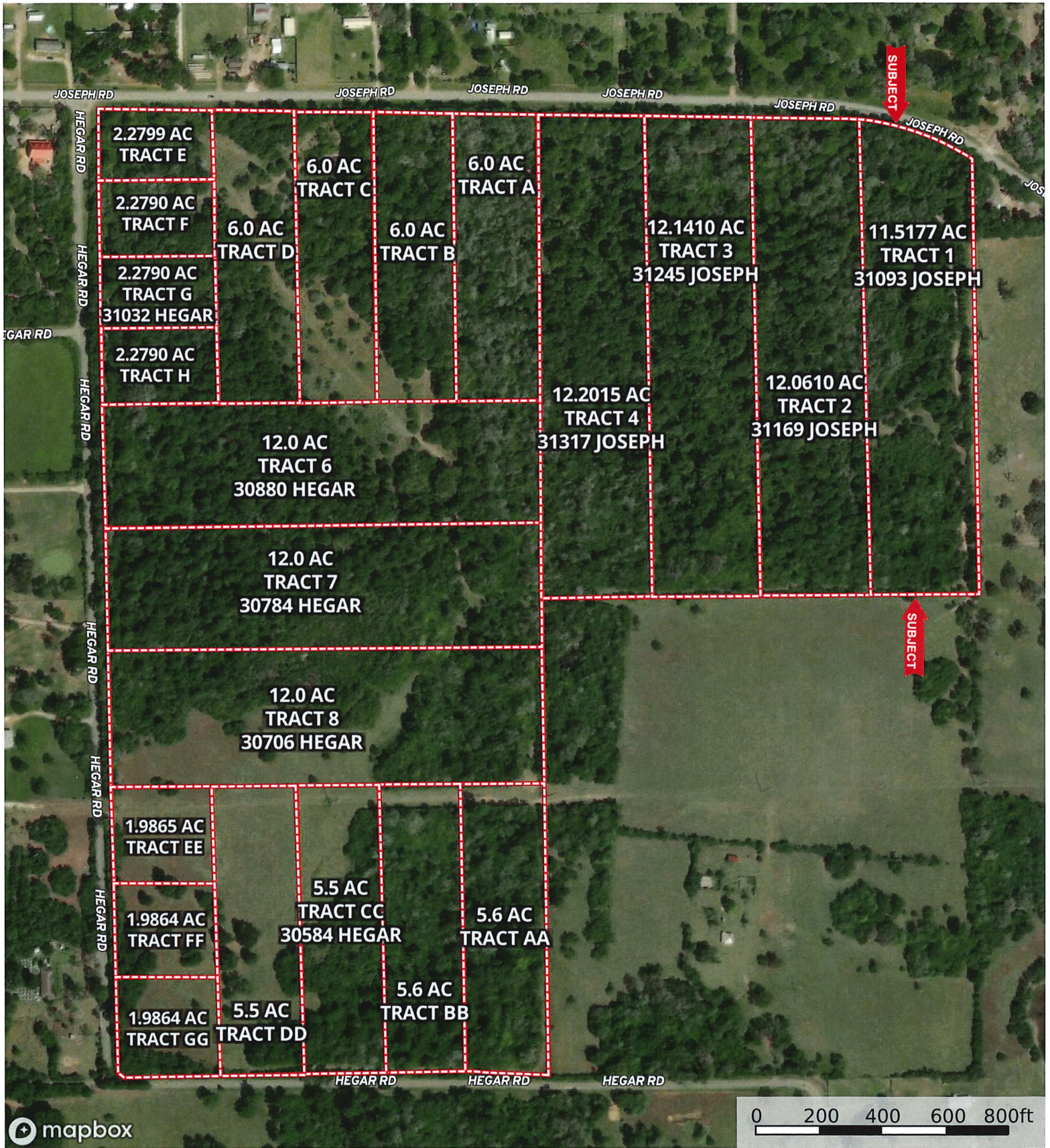
Sharp

Sharp



# Joseph & Hegar - Complete Division

Waller County, Texas, AC +/-



mapbox

0 200 400 600 800ft

Boundary



**Joseph Rd. - Tract 1**

Waller County, Texas, 11.5177 AC +/-



© 2025 Houston-Galveston Area Council, Maxar Technologies, Texas General Land Office, U.S. Geological Survey, USDA/NRAC/GEO

0 200 400 600 800ft

 Boundary



The information contained herein was obtained from sources deemed to be reliable. MapRight Services makes no warranties or guarantees as to the completeness or accuracy thereof.



**Joseph Rd. - Tract 1**  
 Waller County, Texas, 11.7658 AC +/-



-  Boundary
-  100 Year Floodplain
-  500 Year Floodplain
-  Floodway
-  Special
-  Unmapped/ Not Included