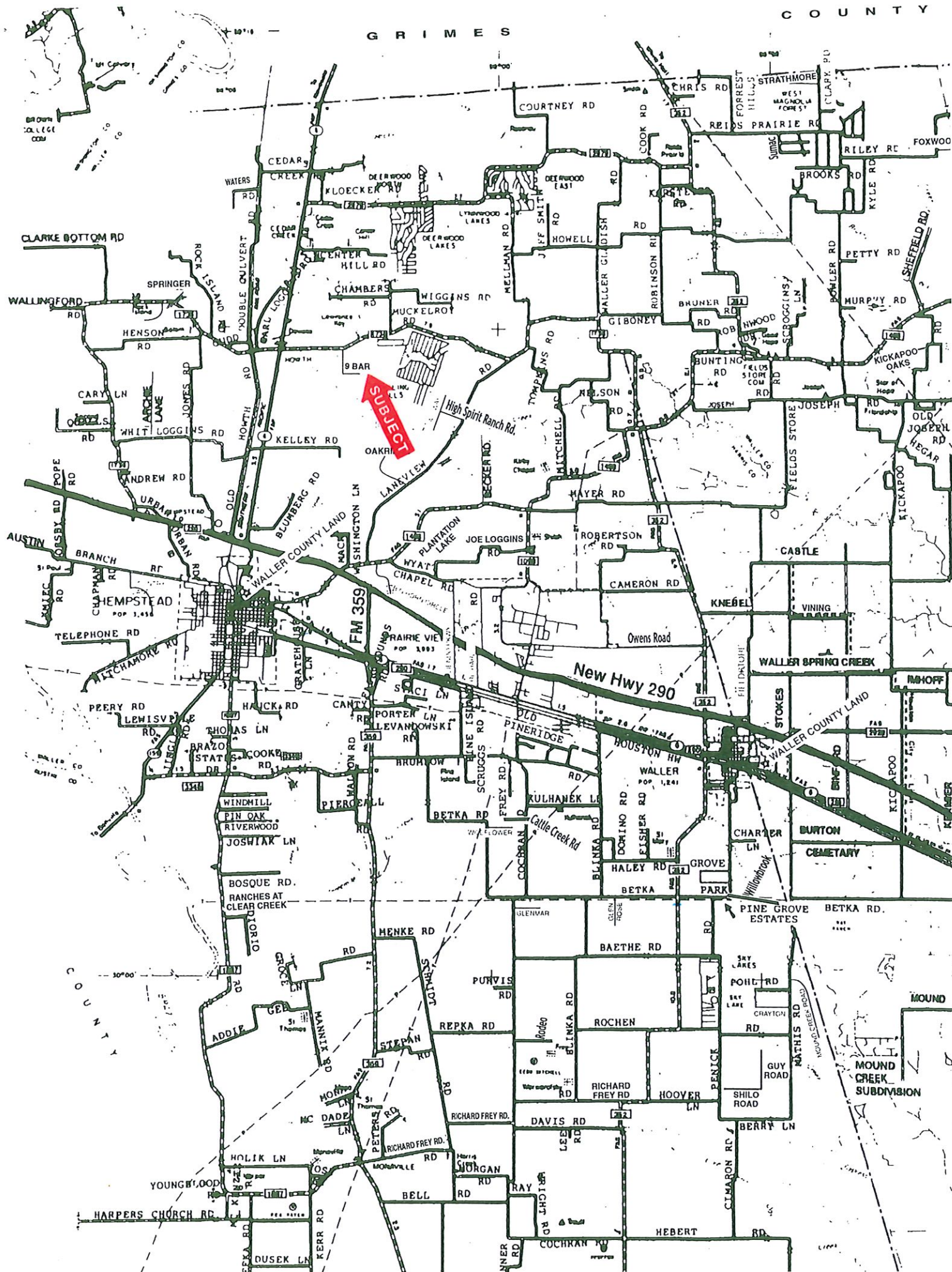


GRIMES

COUNTY



SUBJECT

New Hwy 290

FM 359

MOUND CREEK SUBDIVISION

BURTON CEMETARY

High Spirit Ranch Rd.

HARPERS CHURCH RD.

YOUNGWOOD

COUNTY

MOUND

WALLER COUNTY LAND

WALLER SPRING CREEK

WALLER COUNTY LAND

STOKES

WALLER COUNTY LAND

WALLER COUNTY LAND

WALLER COUNTY LAND

WALLER COUNTY LAND

WALLER COUNTY LAND

WALLER COUNTY LAND

WALLER COUNTY LAND

WALLER COUNTY LAND

WALLER COUNTY LAND

WALLER COUNTY LAND

WALLER COUNTY LAND

WALLER COUNTY LAND

WALLER COUNTY LAND

WALLER COUNTY LAND

WALLER COUNTY LAND

WALLER COUNTY LAND

WALLER COUNTY LAND

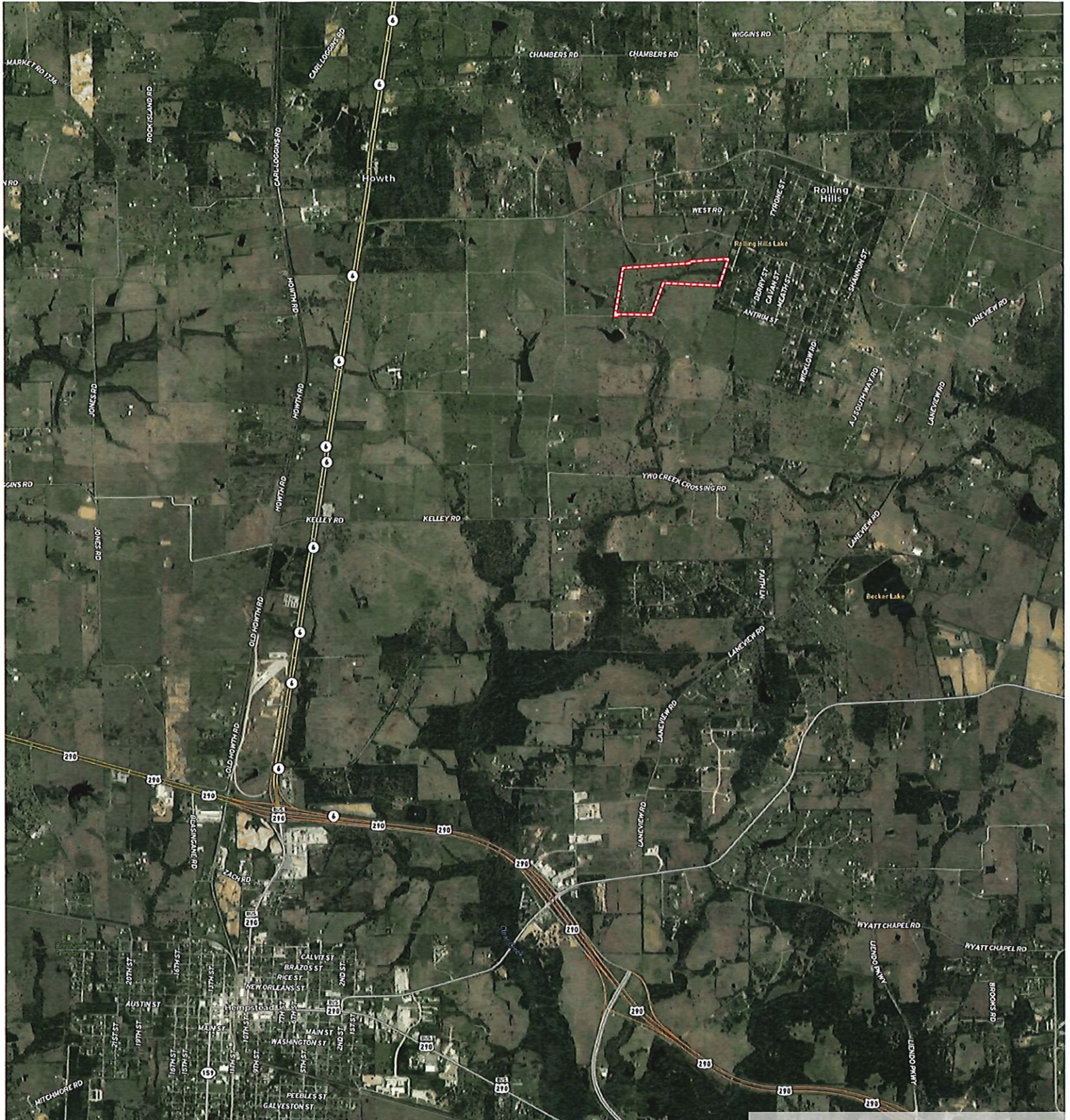
WALLER COUNTY LAND

WALLER COUNTY LAND

WALLER COUNTY LAND

WALLER COUNTY LAND

Nine Bar West
Waller County, Texas, AC +/-



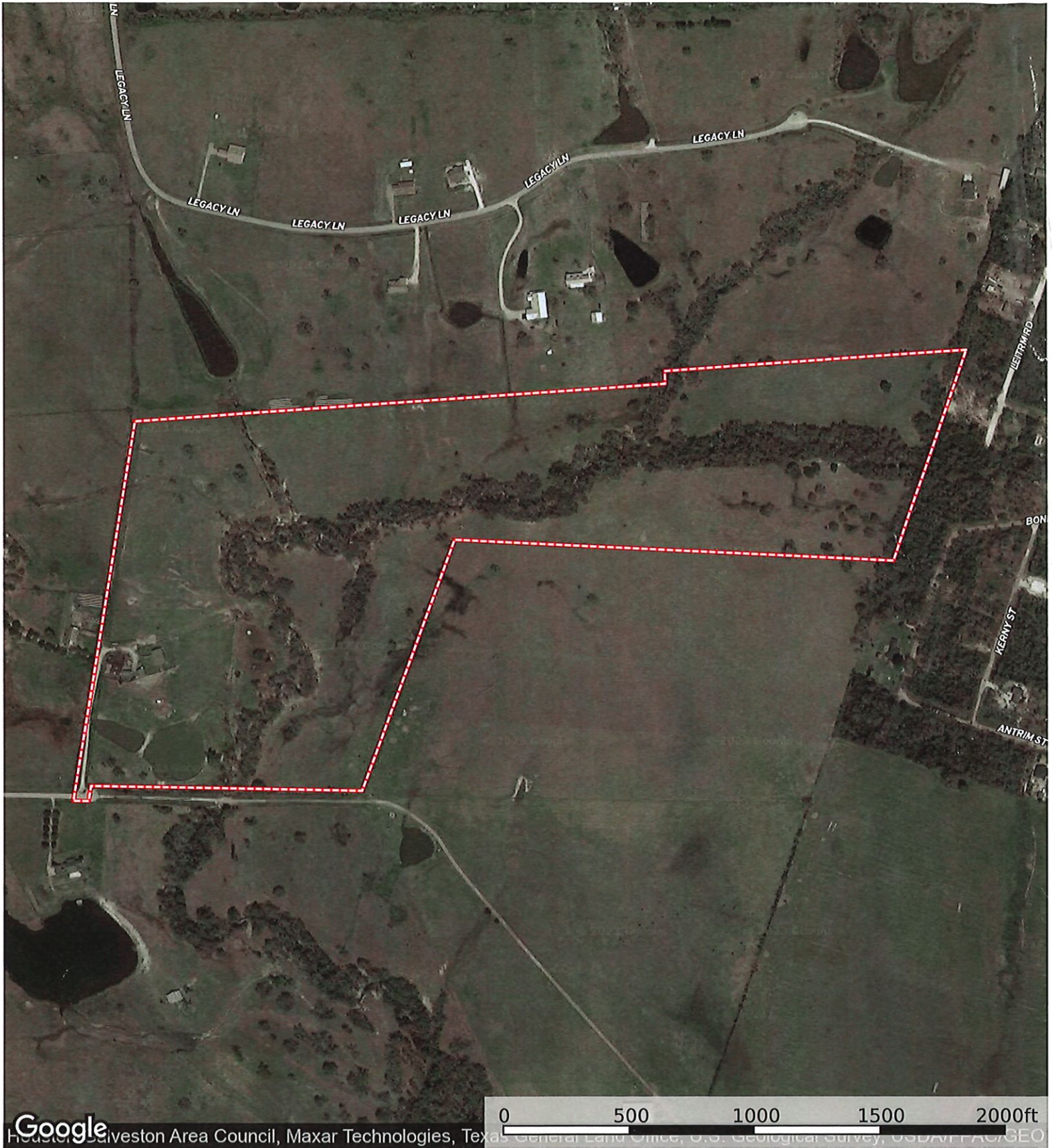
Google, Landsat, Copernicus, Maxar Technologies, Texas General Land Office, U.S. Geological Survey, USDA, NOAA, EO

Boundary

id. The information contained herein was obtained from sources deemed to be reliable. Land id™ Services makes no warranties or guarantees as to the completeness or accuracy thereof.

Nine Bar West

Waller County, Texas, AC +/-



Google

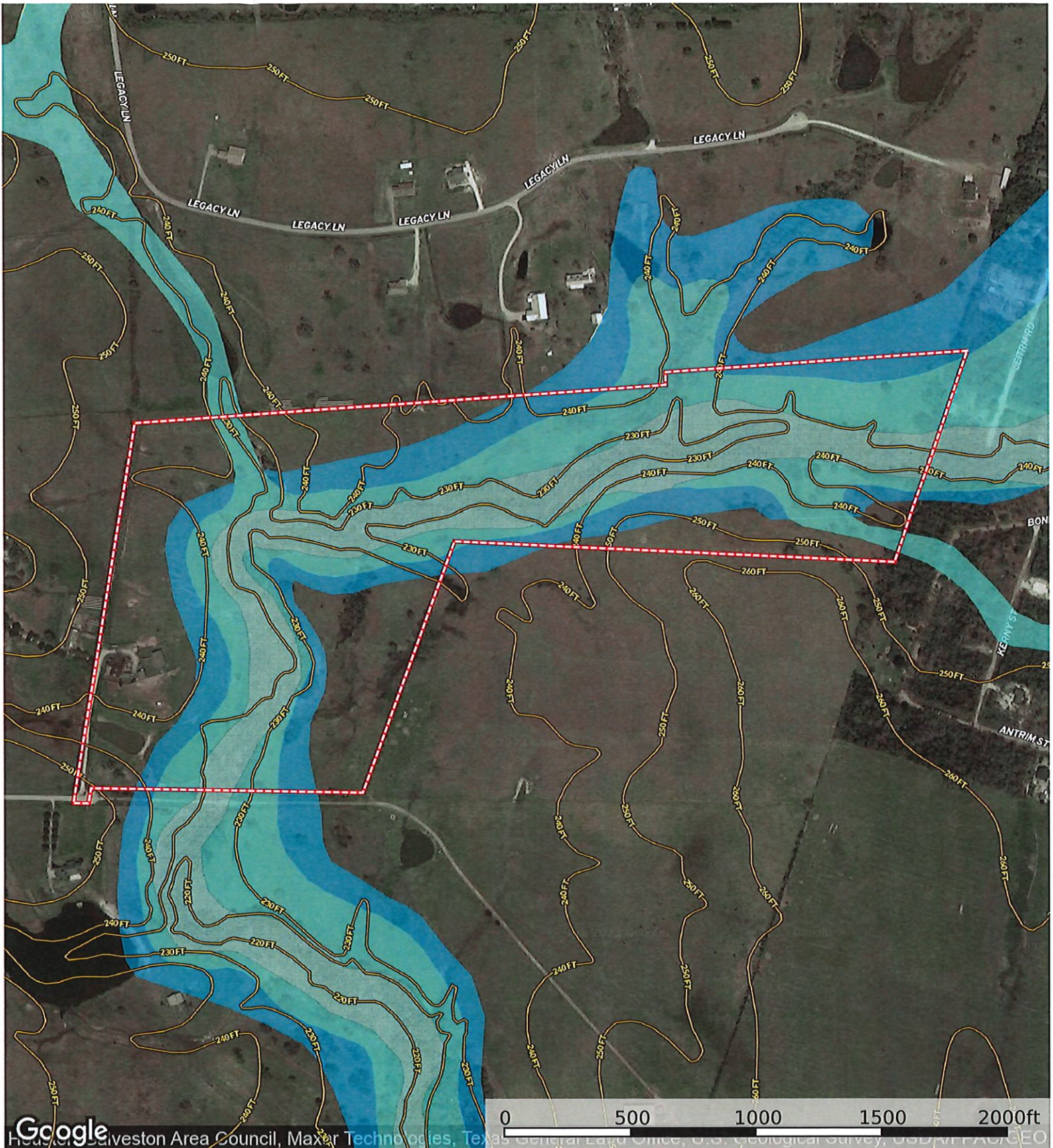
0 500 1000 1500 2000ft

Boundary



The information contained herein was obtained from sources deemed to be reliable. Land id™ Services makes no warranties or guarantees as to the completeness or accuracy thereof.

Nine Bar West
 Waller County, Texas, AC +/-



Google

Houston Livestock Area Council, Maxar Technologies, Texas General Land Office, U.S. Geological Survey, USGS, NAD83, GEO

-  Boundary
-  100 Year Floodplain
-  500 Year Floodplain
-  Floodway
-  Special
-  Unmapped/ Not Included