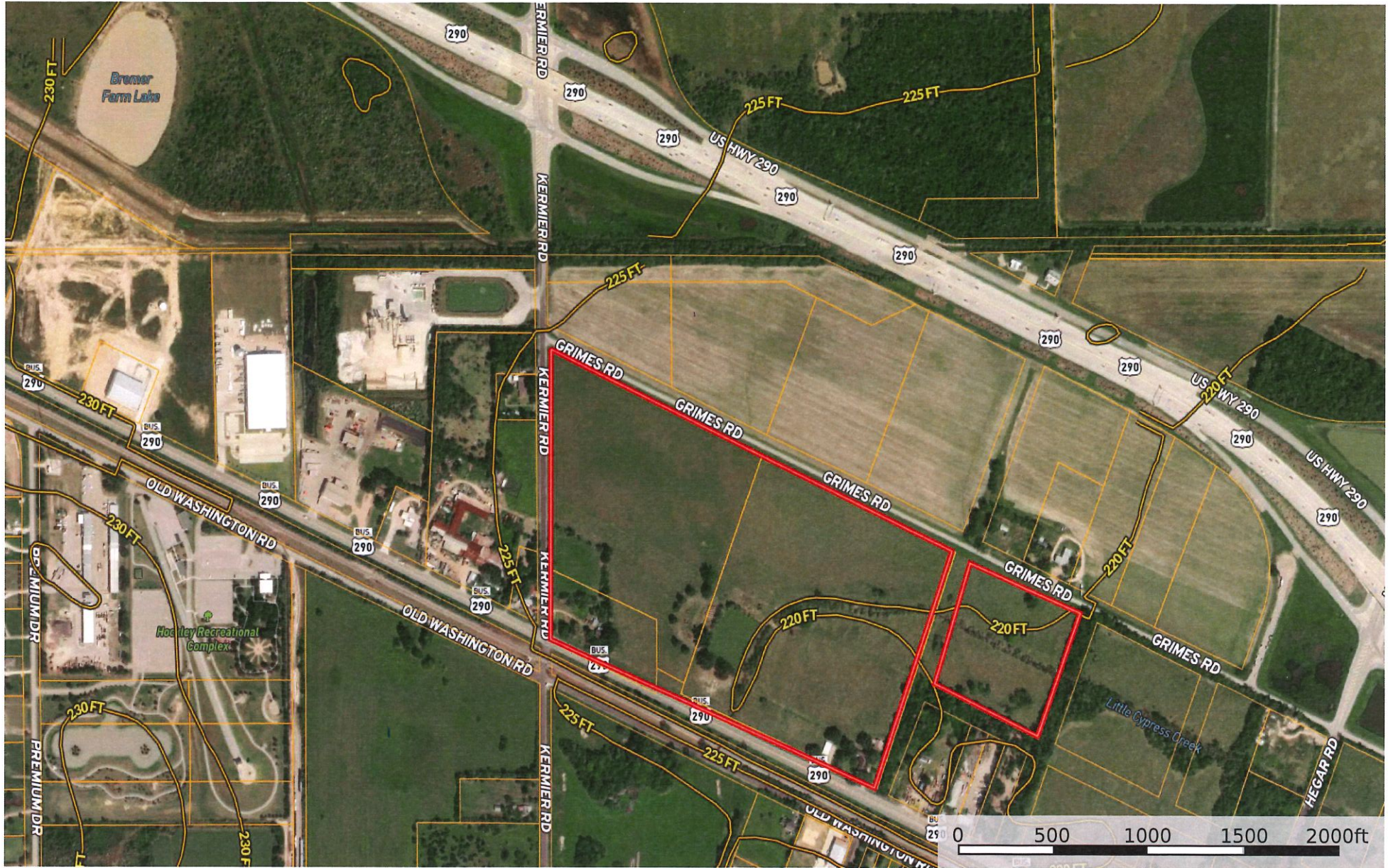
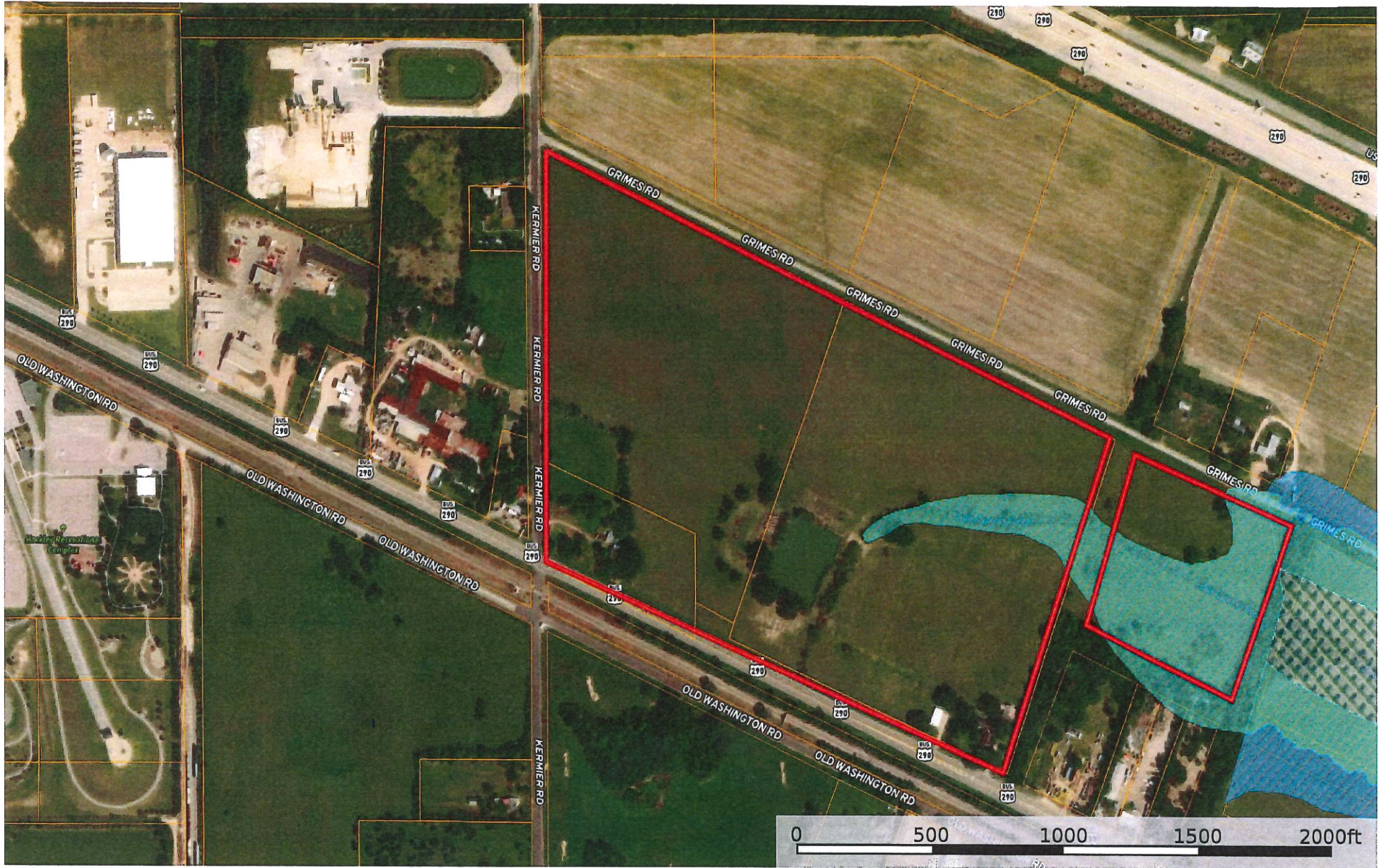


Hockley - 64.6044 Acs
Texas, 64.6044 AC +/-



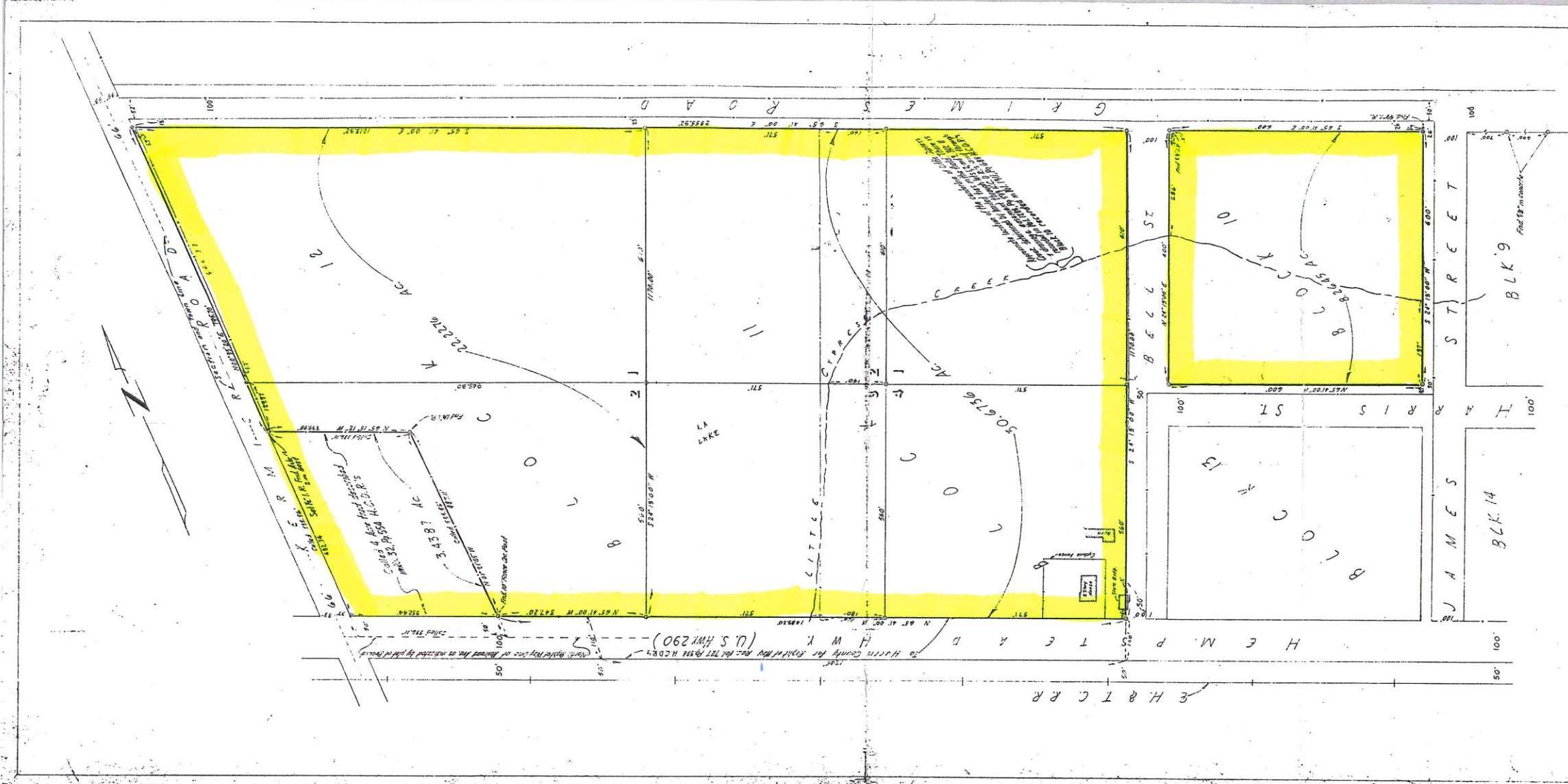
 Boundary

Hockley - 64.6044 Acs -
Texas, 64.6044 AC +/-



- | | | | | | | | | | | | | | |
|-------------|---------------------|---------------------|----------|---------|------------------------|---------------------|-------------------|----------------------|----------------------|----------------|----------------|-----------------|-----------|
| Boundary | 100 Year Floodplain | 500 Year Floodplain | Floodway | Special | Unmapped/ Not included | Voltage Unavailable | Voltage 0 - 99 KV | Voltage 100 - 161 KV | Voltage 220 - 287 KV | Voltage 345 KV | Voltage 500 KV | Voltage 735 KV+ | Crude Oil |
| Natural Gas | Other | | | | | | | | | | | | |





MAP OF SURVEY OF
 61.1857 Acres of land being Block 10 and the accompanying Block 12
 in the town of Hackley and being part of Section 20 of Harris County School
 Lands, the plat of which is recorded in Vol. 12, Pg. 444 H.C.D. 23
 OFFICE: B.A. 1906 A. E. 15100 George Harris, Clerk, Texas
 DATE: Oct. 2, 1906 B.O. 186, 187, 188, 189, 190, 191, 192

Note: Symbols indicate
 Set in concrete otherwise

I hereby certify that this survey was made on the
 above described land and that the same is correct
 and true according to the records of the
 office of the Surveyor.
 R. A. Winkler, Registered Public Surveyor - 65

