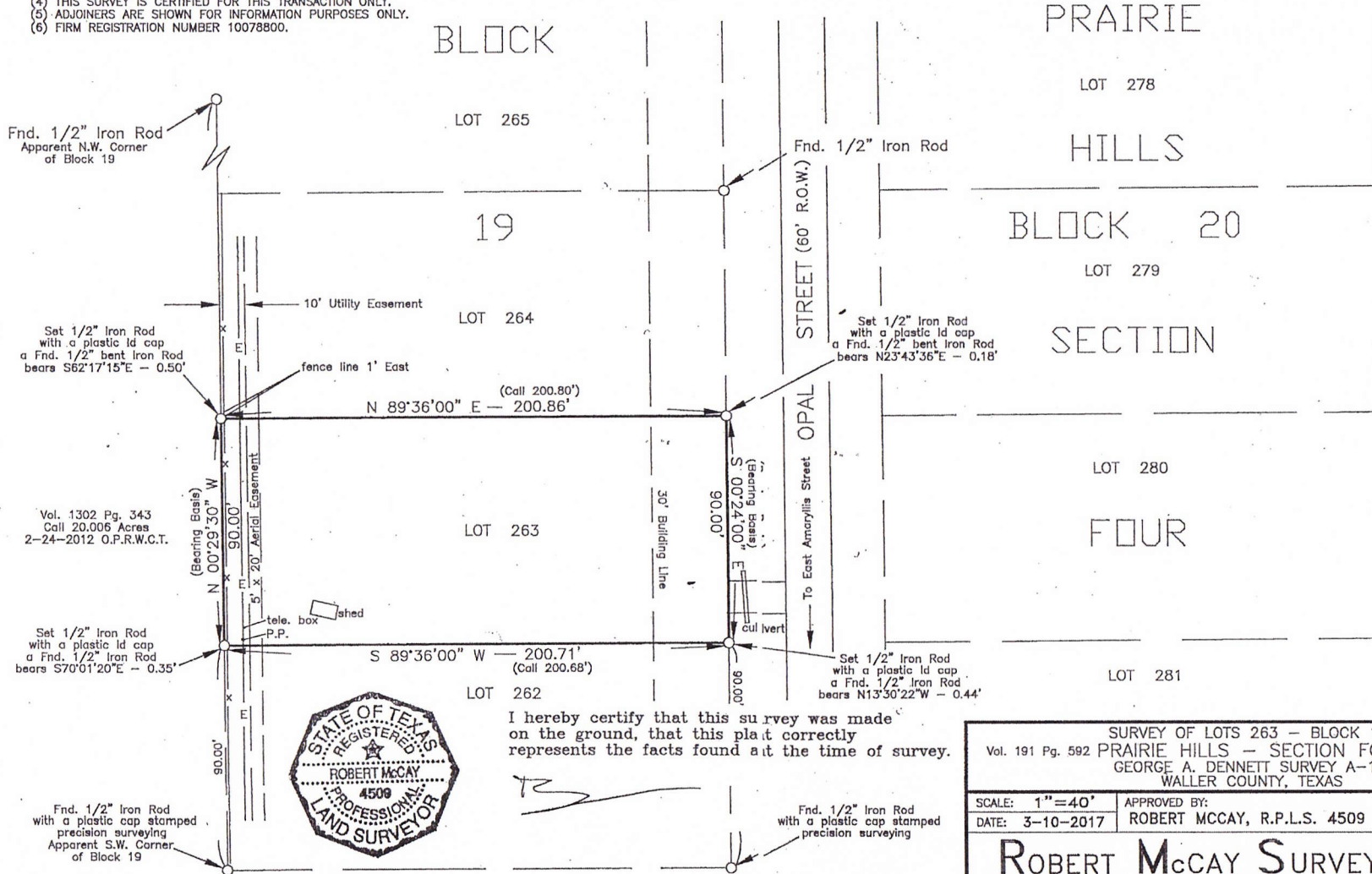


- NOTES: (1) THIS SURVEY WAS PREPARED WITHOUT THE BENEFIT OF A TITLE COMMITMENT.  
 (2) BEARINGS BASED ON THE N.W. CORNER OF BLK. 19 & S.W. CORNER OF BLK. 19.  
 (3) SUBJECT TO ANY AND ALL COVENANTS, RESTRICTIONS, EASEMENTS, ORDINANCES AND CONDITIONS WHICH MAYBE APPLICABLE.  
 (4) THIS SURVEY IS CERTIFIED FOR THIS TRANSACTION ONLY.  
 (5) ADJOINERS ARE SHOWN FOR INFORMATION PURPOSES ONLY.  
 (6) FIRM REGISTRATION NUMBER 10078800.



I hereby certify that this survey was made on the ground, that this plat correctly represents the facts found at the time of survey.



SURVEY OF LOTS 263 - BLOCK 19 Vol. 191 Pg. 592 PRAIRIE HILLS - SECTION FOUR GEORGE A. DENNETT SURVEY A-124 WALLER COUNTY, TEXAS			D.R.W.C.T.
SCALE: 1" = 40'	APPROVED BY: ROBERT MCCAY, R.P.L.S. 4509	DRAWN BY: R.M. REVISED:	
DATE: 3-10-2017	<b>ROBERT McCAY SURVEYING INC.</b>		
ROUTE 3 BOX 181F HEMPSTEAD, TEXAS 77445	P.O. BOX 1506 WALLER, TEXAS 77484	(979) 826-0222 (409) 826-8949	DRAWING NUMBER: 1101-588A





... data ©2016 Google Imagery ©2016 ... PCCG, Digital ... Orthomagey Program, U.S. Geological Survey, USDA Farm Service Agency

Boundary

The information contained herein was obtained from sources deemed to be reliable. MapRight Services makes no warranties or guarantees as to the completeness or accuracy thereof. 844.832.6277 - mapright.com





© 2013 Google, Imagery © 2010, © 2008, DigitalGlobe, Texas Ortho Imagery Program, N.S. Geological Survey, USDA Farm Service Agency

 The information contained herein was obtained from sources deemed to be reliable. MapRight Services makes no warranties or guarantees as to the completeness or accuracy thereof. 844.932.6277 - mapright.com