

WALLER COUNTY LAND COMPANY

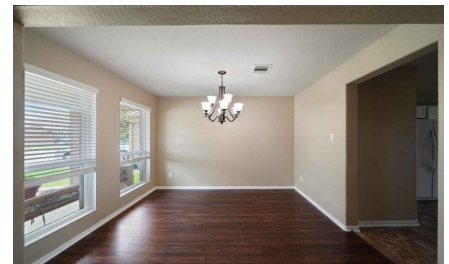
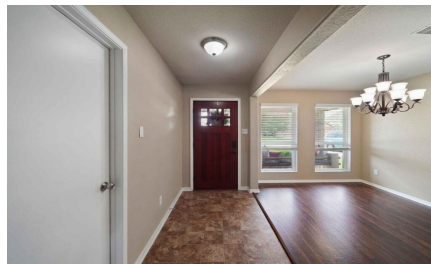
Established 1985

Waller Office: 936.372.9181
Hempstead Office: 979.826.4133

3102 View Valley Trail - List Price: \$299,000

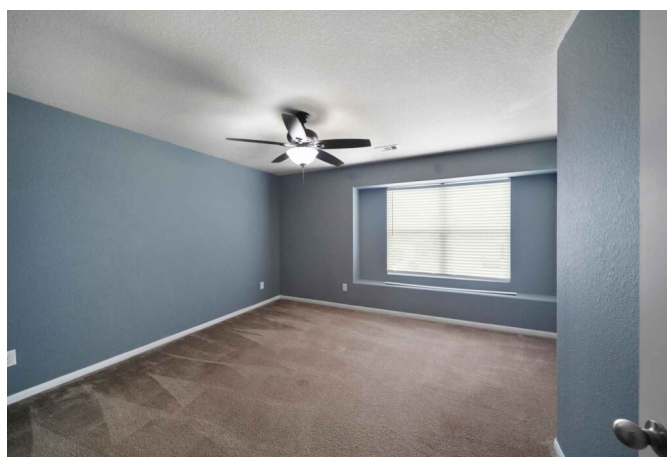
Property Type: Residential

[VIEW ON MAP](#)



Description:

Nestled in Morton Creek Ranch, this 4-bedroom, 2.5-bathroom home offers modern comfort and convenience in a family-friendly community zoned to highly-rated Katy ISD. The inviting foyer leads to a spacious living area with an open floor plan that combines functionality and style. The kitchen features ample cabinet and counter space, perfect for meal preparation and entertaining. The master suite includes a large bedroom, a walk-in closet, and an en-suite bathroom with dual vanities, a soaking tub w/shower. Three additional spacious bedrooms provide flexibility for children, guests, or a home office. Outside, the large backyard offers a private oasis for relaxation and recreation, ideal for summer barbecues, gardening, or unwinding after a long day. The yard boasts fencing on all four sides, and a sprinkler system to keep the grass lush and green. The neighborhood features a pool, splash pad, walking trails, and a superb location with easy access to HWY 99.



Acres: Call for Info

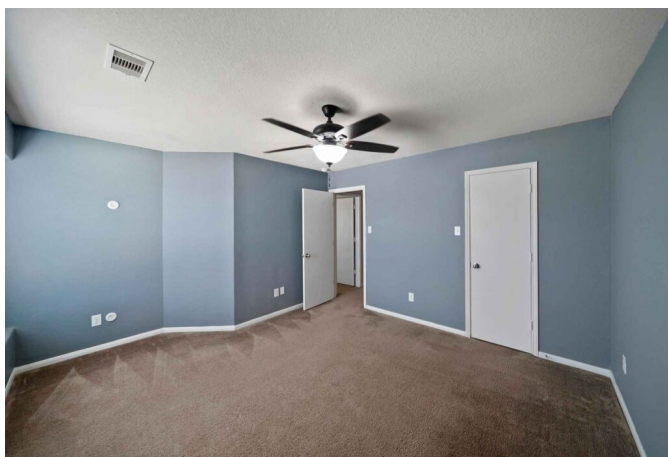
List Price: \$299,000

City: Katy

County: Harris

State: Texas

Zip: 77493

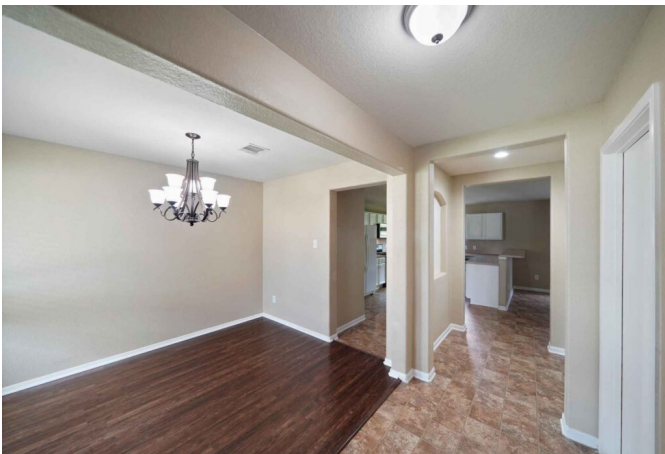
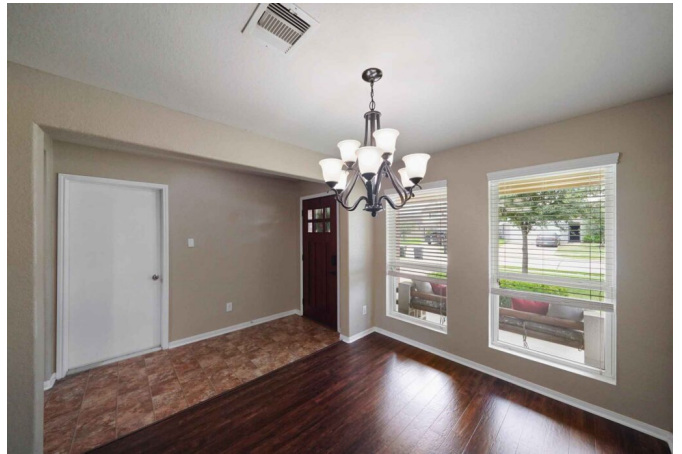


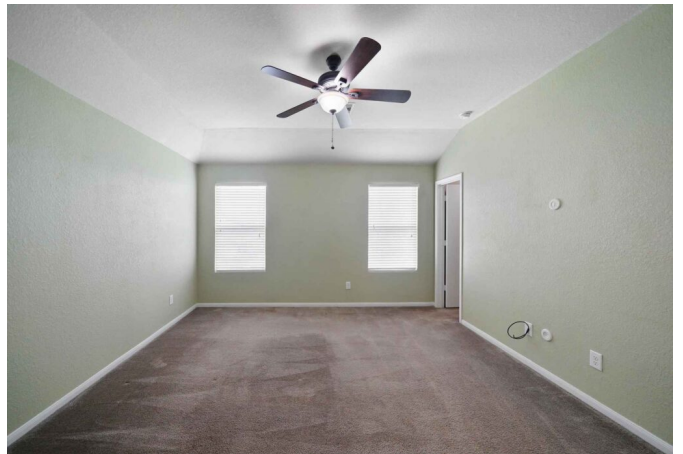
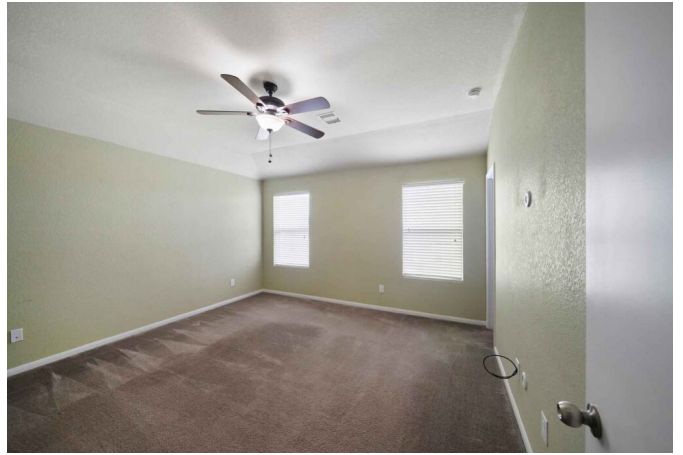
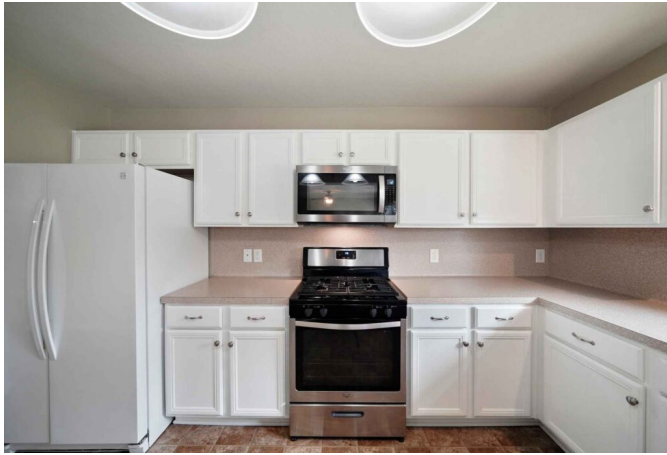
Rendy Elizalde

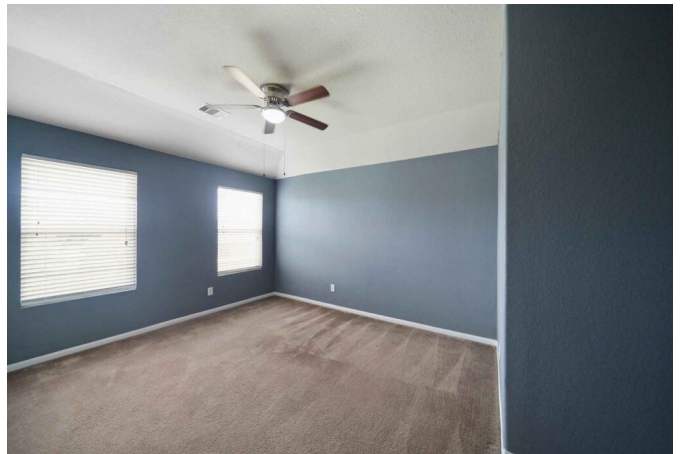


rendy@WallerCountyLand.com

713-806-2830











[Texas Real Estate Commission Information About Brokerage Service »](#) | [Texas Real Estate Commission Consumer Protection Notice »](#)

Copyright © 2024 Waller County Land Company. All rights reserved.