

WALLER COUNTY LAND COMPANY

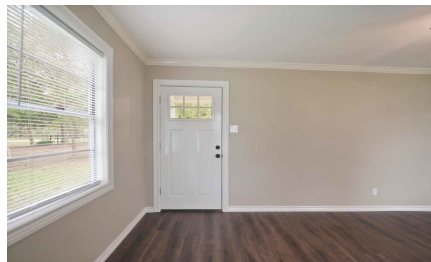
Established 1985

Waller Office: 936.372.9181
Hempstead Office: 979.826.4133

27449 Tepee Trail - List Price: \$205,000

Property Type: Residential

[VIEW ON MAP](#)



Description:

Adorable cottage on 2 unrestricted acres in peaceful country setting! This 3 bedroom, 1 bath home has been updated throughout the interior as well as the roof, HVAC, and appliances. Property is cleared with scattered trees, fire pit, workshop and lots of room to roam. In the Waller school district, come take a look!



Acres: 2

List Price: \$205,000

City: Hockley

County: Waller

State: Texas

Zip: 77447

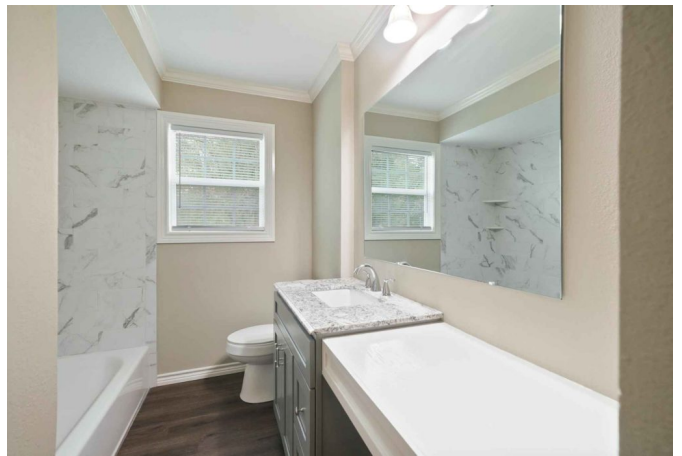


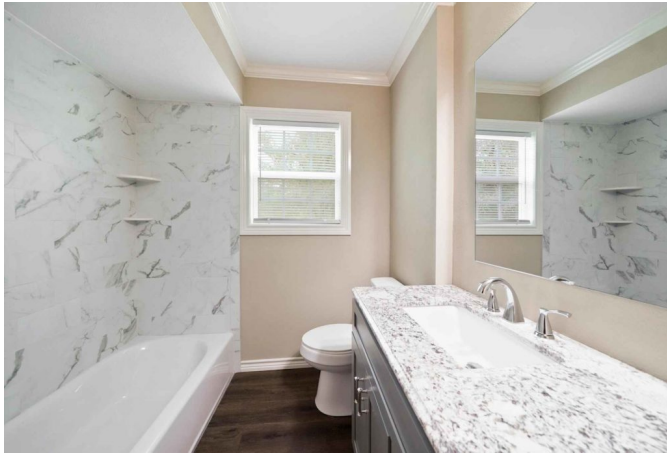
Rendy Elizalde



rendy@WallerCountyLand.com

713-806-2830









[Texas Real Estate Commission Information About Brokerage Service »](#) | [Texas Real Estate Commission Consumer Protection Notice »](#)

Copyright © 2020 Waller County Land Company. All rights reserved.