

# WALLER COUNTY LAND COMPANY

Established 1985

Waller Office: 936.372.9181

Hempstead Office: 979.826.4133

## 26111 Cloverland Park Ln. - List Price: \$600,000

Property Type: Residential

[VIEW ON MAP](#)



Description:

Gorgeous custom home on almost an entire acre right in the heart of Cypress! With over 4,000 square feet of living space and a 30,000 square foot lot you will have all the space you could ever need. This house is truly an entertainers dream. Circular driveway, covered front & back patios, stunning formal dining room with custom built buffet, open-concept kitchen & great room, outdoor kitchen and giant backyard! All secondary bedrooms are located upstairs, making the primary bedroom downstairs a true retreat. The downstairs den & upstairs living room offer multiple options for home office and/or schooling. So much to enjoy outdoors - the mature trees, basketball goal, home garden and more. You'll feel like you're living in the country while being right down the street from all the modern conveniences! This home has been immaculately cared for and it shows! Take the opportunity to come see it today!



Acres: 1

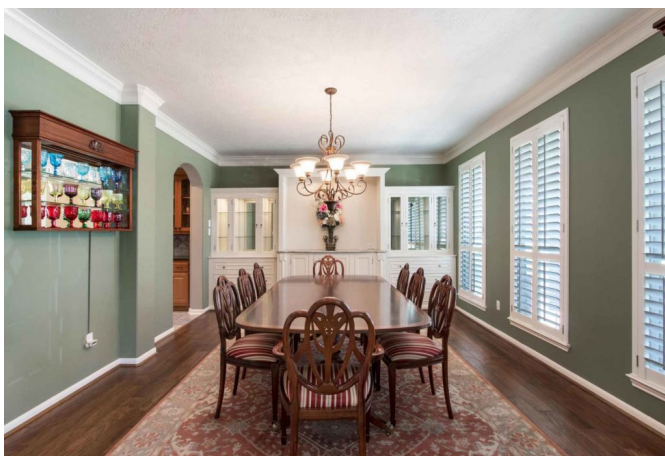
List Price: \$600,000

City: Cypress

County: Harris

State: Texas

Zip: 77433



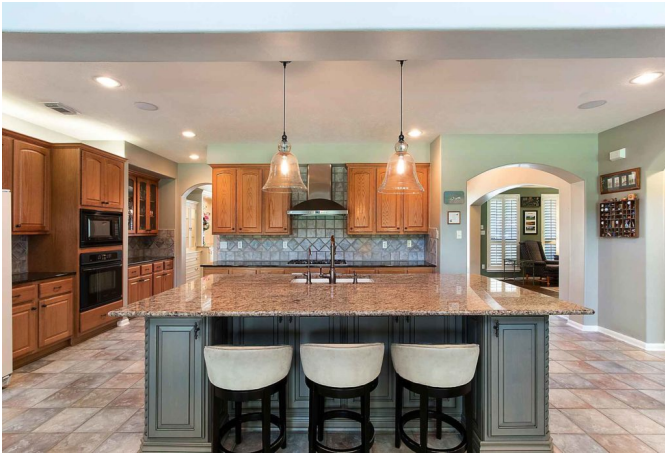
Katherine Wendland



[kwendland@wallercountyland.com](mailto:kwendland@wallercountyland.com)

281-703-9587

















[Texas Real Estate Commission Information About Brokerage Service »](#) | [Texas Real Estate Commission Consumer Protection Notice »](#)

Copyright © 2021 Waller County Land Company. All rights reserved.