

# WALLER COUNTY LAND COMPANY

Established 1985

Waller Office: 936.372.9181  
Hempstead Office: 979.826.4133

## 24883 Nightingale Ln. - List Price: \$320,000

Property Type: Acreage

[VIEW ON MAP](#)



Description:

Wooded unrestricted acreage. Private secluded location. Several potential homesites cleared. Clear as much or as little as you want. Electricity readily available. Ag exemption in place for raising bees. Access via private road off of Macedonia Rd. Property recently surveyed. Build your dream home on this beautiful property. Located minutes from Hwy 290 and Houston Oaks in beautiful Hockley, Texas.



Acres: 5

List Price: \$320,000

City: Hockley

County: Harris

State: Texas

Zip: 77447



Timothy Phelan

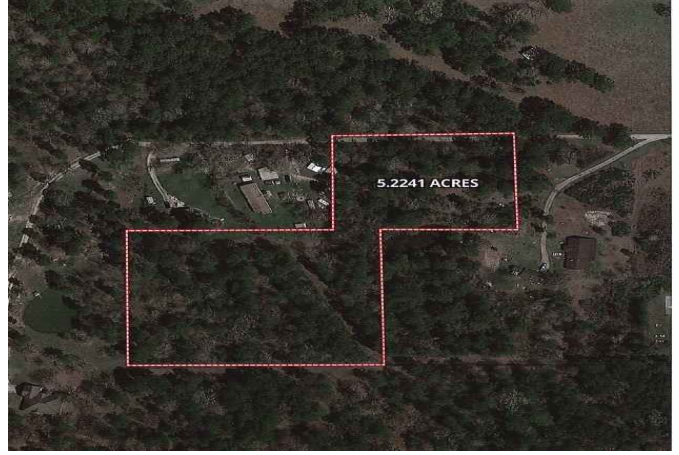


[tphelan@WallerCountyLand.com](mailto:tphelan@WallerCountyLand.com)

281-723-9656







[Texas Real Estate Commission Information About Brokerage Service »](#) | [Texas Real Estate Commission Consumer Protection Notice »](#)

Copyright © 2023 Waller County Land Company. All rights reserved.