

# WALLER COUNTY LAND COMPANY

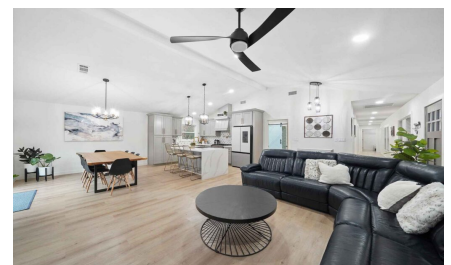
Established 1985

Waller Office: 936.372.9181  
Hempstead Office: 979.826.4133

## 22145 FM 359 - List Price: \$645,000

Property Type: Residential

[VIEW ON MAP](#)



Description:

Located in Waller ISD this captivating modern farmhouse presents a blend of elegance and functionality. With 4 bedrooms and 3.5 bathrooms, the home boasts an open-concept design that seamlessly integrates a beautiful family room featuring a contemporary fireplace w/ floating hearth, a dining area, and a stunning kitchen w/ a commercial range. Entertaining is a delight on the expansive deck that offers a picturesque view of the pond and mature trees. The property spans approximately 3.85 acres, providing a private and secluded retreat. The sizable 2.85 acre parcel at the rear of the property lends itself to versatile possibilities, from hosting events to establishing an Air B&B. Additionally with around 1 acre at the front, there is potential for a lucrative commercial opportunity. With its thoughtful design, scenic surroundings, and versatile potential, this modern farmhouse on nearly 4 acres offers a unique and inviting living experience.



Acres: 4

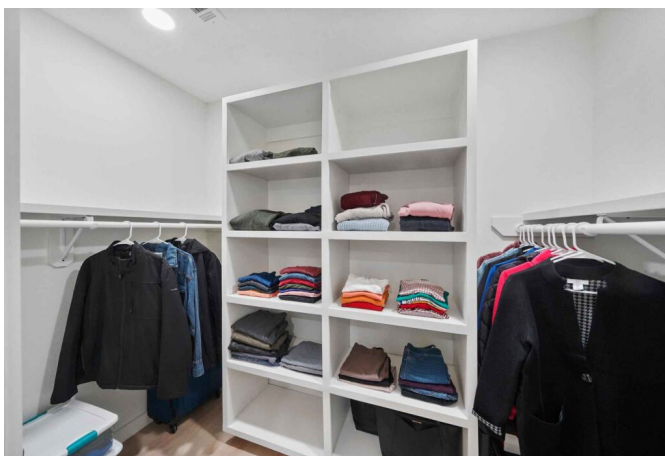
List Price: \$645,000

City: Hempstead

County: Waller

State: Texas

Zip: 77445

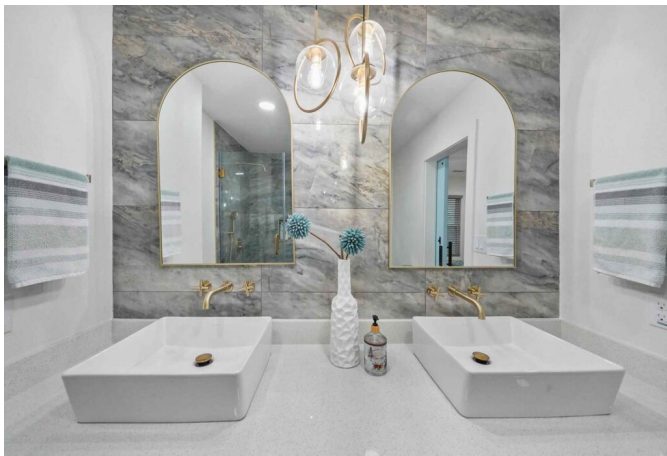


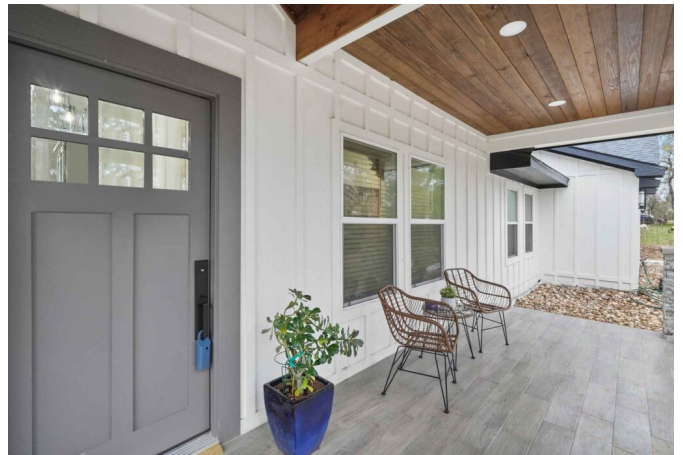
Rendy Elizalde

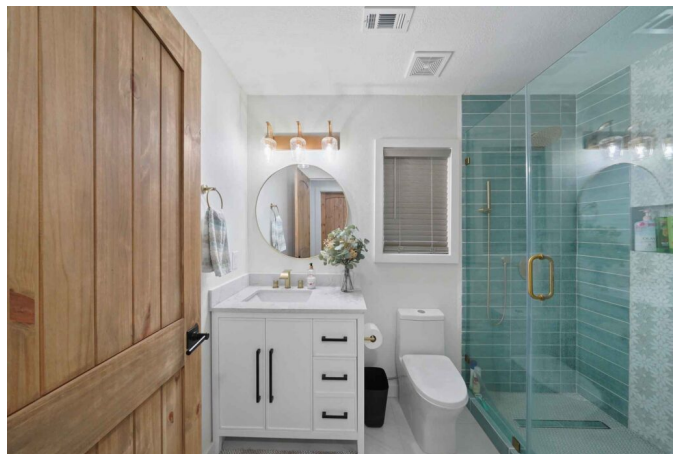
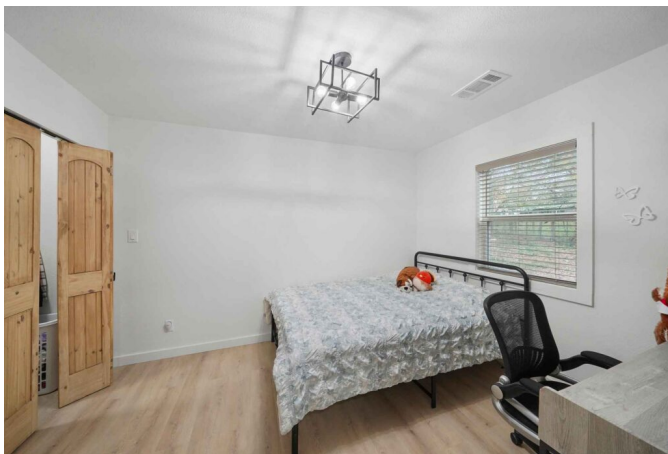
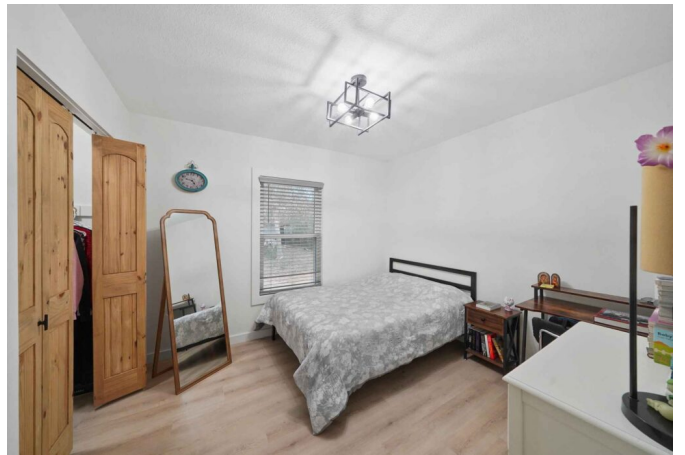
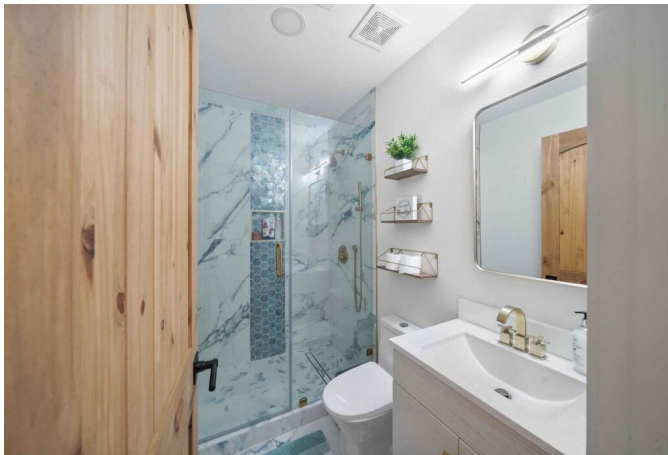


[rendy@WallerCountyLand.com](mailto:rendy@WallerCountyLand.com)

713-806-2830













[Texas Real Estate Commission Information About Brokerage Service »](#) | [Texas Real Estate Commission Consumer Protection Notice »](#)

Copyright © 2024 Waller County Land Company. All rights reserved.